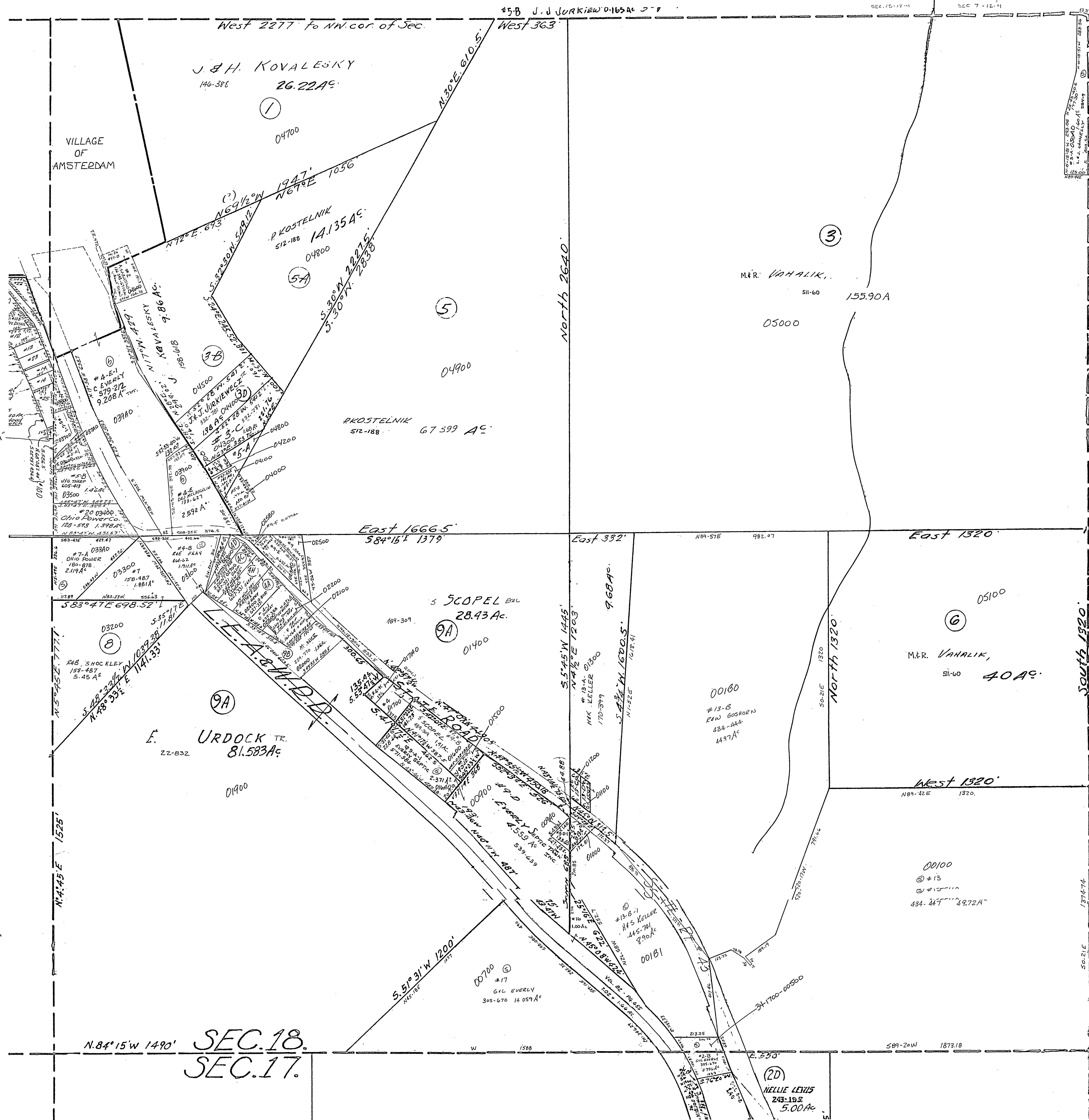


34-1800-

#5-C G.E. MOFFAT	516-324	0.060 AC
#5-D G.E. MOFFAT	528-324	0.433 AC
#8-A A.R. SCOPEL	521-613	0.52 AC
#5-A-1 H. STARR	453-224	0.200 AC
#5-D H. STARR	453-224	0.471 AC
#13-C H.K. KELLER	170-399	0.16 AC
#13-D H.K. KELLER	170-399	0.16 AC
#12 F. UHAS	197-120	0.35 AC
#13-E H.K. KELLER	204-978	0.53 AC
#4-C R.E. J. DENT	500-172	0.42 AC
#4-K G. ROOF	78-70	0.20 AC
#4-G R.E. FRAY	64-62	0.19 AC
#4-F C.E.R. CLIFTON	537-74	0.41 AC
#9-D-1 H.K. KELLER	264-878	0.218 AC
#9-D-2 H.K. KELLER	464-62	0.30 AC
#4-SID. BRAUCKER	618-352	0.451 AC
#19-F P. KOSTELNIK	508-478	0.074 AC
#19-G R. TULODZIESKI	228-737	0.52 AC
#19-E " "	" "	0.632 AC

DETAIL A

#3-C1 FEM UHAS 525-16 0.610 AC
#10-C1 FEM UHAS 525-16 1.026 AC



SPRINGFIELD TWP.
SEC. 18, T. 11, R. 4.
SCALE: 1"=200'